

2004 CAMPING TRAILERS BY JAYCO®

Get close  
to paradise





The only thing better than cherished memories is making new ones.

You have fond memories of tent camping as a child. Now you want your family to experience those memories for themselves. But you've reached a point in your life where sleeping on

the ground and eating out of a cooler isn't as appealing as it used to be. Set off in a Qwest® camping trailer by Jayco® and you can make new memories without the old hassles.



Qwest 10 K



Dine out anytime with the carryout dinette table and 2-burner carryout stove with wind deflector.



The front trunk provides plenty of space for even long items. Reach your gear through the pass-through access even when the bunks are set up (Qwest® 10 K).



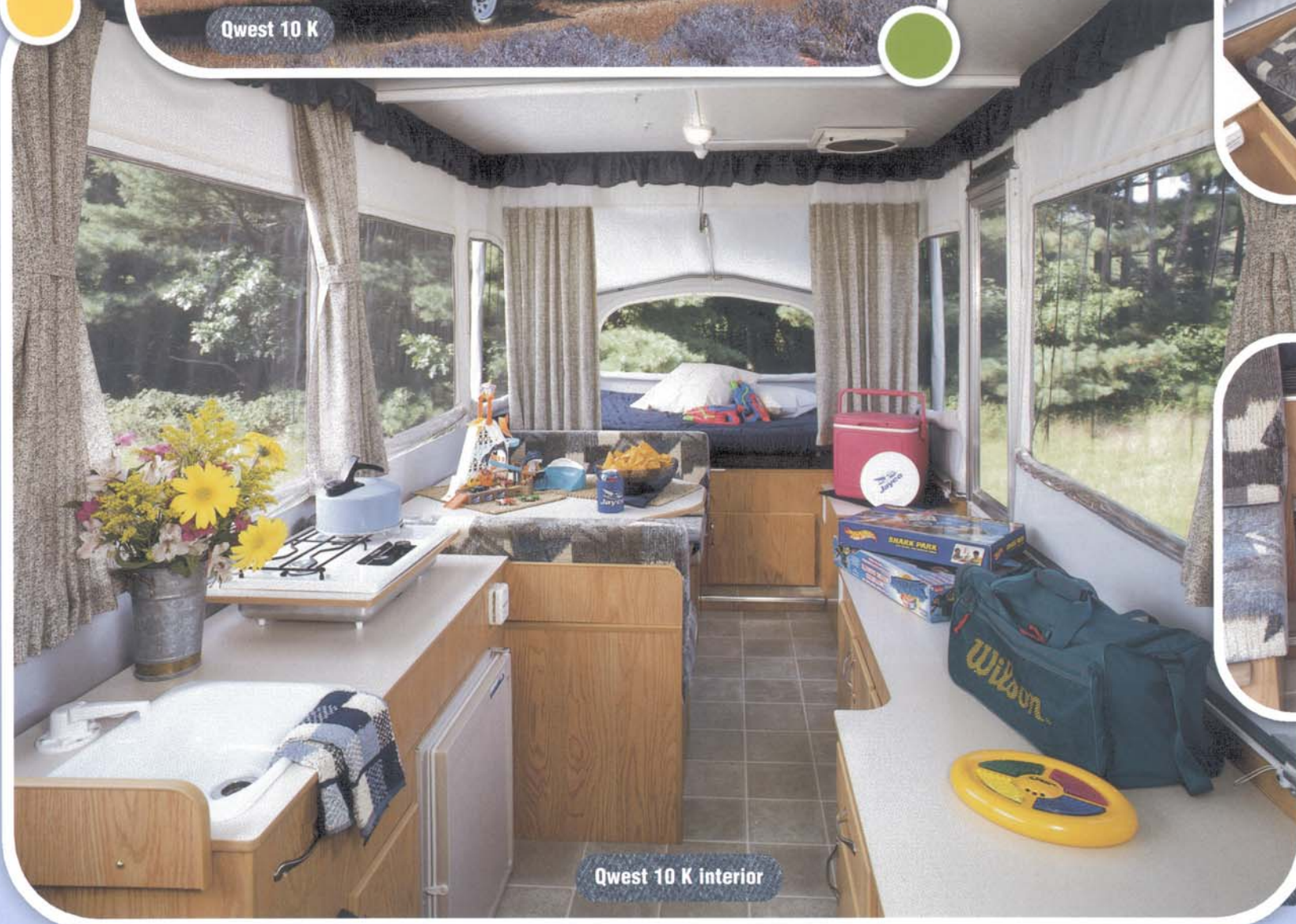




Qwest 10 K



The dinette converts easily to give you additional sleeping space.



Qwest 10 K interior



Reach items in the front trunk from inside when it's raining or too dark outside (Qwest® 10 K).





## Qwest® Baja camping trailers

See the wonders  
of the road less  
traveled.

Leave the carefully manicured campsites to those who want to play it safe. You'd rather get away from the crowds and find a remote spot where you can tackle hills and untouched forest. Where you can kayak that part of the river most people avoid. Where you can breathe. Get ready, because we built Qwest® Baja camping trailer to take you there.

Qwest Baja 10 Z

An optional 12V rechargeable spotlight gives you clear views at night.

Qwest Baja  
by Jayco

The optional battery gauge means you'll always know how much power you've got.

The retractable double step folds out of the way and makes climbing in and out safe and easy.

Front diamond plate stands tough against rocks and debris. The optional vinyl cover guards your twin LP gas bottles. The front deck gives you room for options such as a fuel tank, tool box and generator.

Rear diamond plate and heavy-duty tubular steel bumper protect the rear, while an optional vinyl tire cover protects your optional spare.





Qwest® Baja 10 Z interior



## Qwest® Baja camping trailers



Qwest® Baja 10 Z



The optional diamond plate tool box provides a sturdy and convenient place for your tools and other items so you don't have to find room for them inside.

Add the optional 2,800-watt Onan® generator for the power to go anywhere — not just campsites with hookups.

Shock absorbers make towing over rough terrain smoother.

Rugged 15" Dunlop® Mud Rover off-road tires with aluminum rims take you to places others can't reach. Rubber fenders won't dent and protective mud flaps are standard equipment.





Find out why sitting around a campfire beats sitting around a television.

There's something almost magical about watching a crackling campfire. Soon you realize the warmth you feel is from more than just the flames. Enjoy a peacefulness only nature can provide when you set out

in an Eagle™ camping trailer by Jayco®. You'll get more of the comforts you enjoy, more of the conveniences that make your stay easier and more reasons to return as soon as possible.



The one-piece entrance door features our Velcro® tent attachment system to form a tight seal.

Eagle 12 LD



Enjoy time doing absolutely nothing in the shade of the optional canopy.



Roll-down tent panels in the optional deluxe screen room give you extra privacy or protection against bad weather.

Color-coordinated radius skirting guards against stones and adds an attractive accent.

The molded ABS fender skirt protects against wear and debris and looks great.

The clothes hanger bar gives you a convenient place to keep items neat.

Stay clean with the optional bath/shower package (some models), including shower with curtain that sets up easily and folds down to give you an extra storage shelf. The package also includes the optional deluxe plumbing package.

Move dinner outdoors with the carryout dinette table.





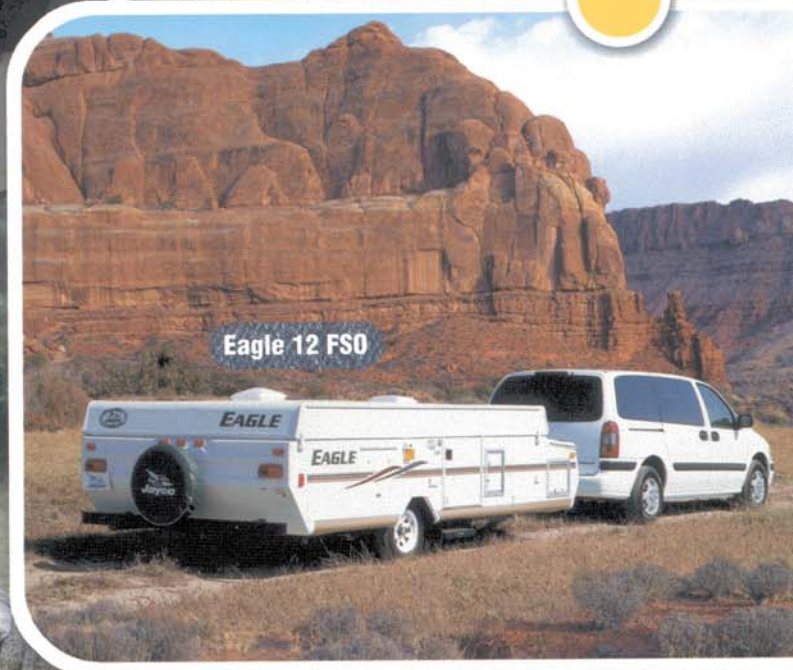


Eagle sports a streamlined look with front and rear ABS caps.

# Eagle™ camping trailers



Eagle™ 12 FSO interior



Eagle 12 FSO



The portable 3-burner range (2-burner range on 10 SG) gives you the choice of cooking inside or outside.

The slideout dinette (12 FSO and 14 SO) provides extra room to enjoy meals.

The white acrylic sink with single-lever faucet and 12V demand water pump provides a great place to wash up.

Extra touches go a long way, including room for spices in an optional spice rack.

An optional silverware tray keeps all your utensils well organized (some models).





# Eagle™ Select camping trailers

They don't call them "breathtaking" views for nothing.

When a wide vista spreads out before you, adorned with vibrant emerald forests and sparkling sapphire waters, you know that no description or photograph can do it justice. In Jayco's new Eagle™ Select camping trailer, you can set up camp right next to those dazzling views in a vehicle as beautiful as your surroundings.



Front and rear diamond plate stands tough against rocks and debris.

Eagle Select 12 HW



Eagle Select 12 HW

Eagle™ Select offers more than expected with optional features such as polished aluminum rims.

Store loads of gear in the front trunk. You can also store items beneath the dinette and access them from the outside.

The double-bowl white acrylic sink comes equipped with a high-rise faucet.

The convenient 3-cu.-ft., 3-way (110V/12V/LP gas) Norcold® refrigerator is standard.







Eagle™ Select 12 HW interior

Our beautiful, solid Westview maple flat-panel doors and drawers are built with strong mortise-and-tenon joints.



The optional oven with range expands your meal choices. The fold-down range cover expands your counter space.



The optional microwave with carousel makes cooking easy.



Courtesy floor lights help you move around at night.



The battery gauge tracks your power level at all times.



The fluorescent light above the kitchen sink puts ample light right where you need it.





## Find peace and quiet by getting away.

That long, twisting road is more than a route to your favorite park. It's a path toward the kind of peace and quiet you can find only by getting away.

We build Designer® camping trailer with the most luxurious conveniences available, so you can get away without leaving behind the comforts of home.



The optional Founder's Edition package includes polished aluminum rims and special graphic insignia that add an extra touch of style. Color-coordinated ABS fender skirts are standard.



The outside shower with hot and cold faucets, rugged ABS plastic hose and shower head is part of the standard deluxe plumbing package, which also includes a 6-gallon water heater and 12V demand water pump.

Designer 12 F5

The seamless fiberglass domed roof will repel water for years to keep you dry.

The bay window expands your interior space (Designer 12 F5).

Designer® looks great with front and rear fiberglass body panels, integrated rear bumper, fiberglass LP bottle cover and spare tire/storage compartment cover.

The self-storing step makes climbing in and out easier.





# Designer® camping trailers



The optional Founder's Edition Package adds conveniences like a sink cover to increase counter space, silverware tray to organize utensils and fitted sheets and pillow cases to match your interior.



Optional heated innerspring bed mats keep you warm, even on cold nights.



End-bunk privacy curtains are standard. Bunk storage shelves, included in the Founder's Edition Package, give you a convenient place for bedside items.

Designer® 12 F5 interior



The convenient 2-cu.-ft., 3-way (110V/12V/ LP gas) Norcold® refrigerator is standard.



Our beautiful oak cabinets include solid oak flat-panel doors built with strong mortise-and-tenon joints and real wood drawers.

Our innovative swing-level galley pulls up easily for setup and down easily to store.

The deluxe plumbing package includes a dual-knob faucet just like yours at home.

An optional cable and TV jack gives you more entertainment choices.





# Jayco® camping trailers

Strike new paths from a home base built on a solid foundation.

Jayco's exclusive one-piece, double-stitched, water-repellent Camper-Tex™ vinyl tent is manufactured in our own sewing facility and comes with a five-year warranty. We avoid the jammed zippers, bug holes and loose seams that come standard with competitors' cheaper sectionalized, single-stitched tent construction.

Our unique Velcro® tent-to-bunk end attachment system is stronger than the bungee cord system used by our competitors.

Our laminated fiberglass domed roof with no center seam comes with a lifetime warranty (one-piece seamless fiberglass on Designer).

Our Velcro® entrance door tent attachment system forms a tight seal.

Jayco's exclusive SoftShade™ window treatments offer you flexibility. They can be used as roll-up shades or as conventional drapes.

The reversible, non-slide dinette cushions with vinyl backs clean up easily. Simply wipe off or unzip to remove for thorough cleaning.



Our single-piece Structurwood® floor is undercoated and edge-sealed to keep out moisture and stand strong for years. It comes with a lifetime warranty.

E-Z Lube® axles with removable caps make maintenance simple.



The self-storing step makes climbing in and out easier (optional on all Qwest® and Eagle™ 10 SG).



Optional deluxe quilted and heated bed mats keep you warm even on cold nights.





An optional 12V attic fan, separate from the optional roof vent, improves ventilation for greater comfort.

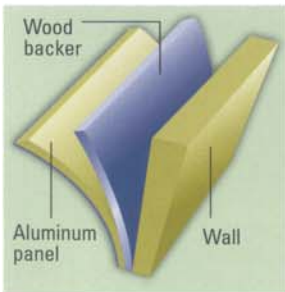
One or two optional end bunk lights, combined with a built-in two-speed fan, give you ample light at night and better ventilation.

In the heart of the Midwest, old-world craftsmen have handed down tried-and-true construction methods from generation to generation. At our headquarters in Middlebury, Indiana, Jayco® continues this tradition when building all of our recreational vehicles. Our rugged designs, solid construction and commitment to quality add up to a well-built vehicle you can depend on for years.



Well-built end bunks handle loads of weight (1,050 lb. capacity). Made from 5-ply exterior grade, weather-treated plywood, the bunks are mounted on steel slides with smooth rollers to let you set up easily in minutes.

Laminated double-wall construction with wood backers makes sidewalls strong so they won't bow or dent as easily as competitors' single-wall, non-backed sidewalls. Unlike other manufacturers, we also make sidewalls strong by screwing them through both the floor and the frame. And the TruForm® surface (Eagle™, Eagle™ Select and Designer®) makes them scratch-resistant.



The easy-to-use crank-down stabilizer jacks mean you won't have to crouch down as far and reach underneath the camper. (Standard on rear. Front optional on 8' and 10' Qwest® and Qwest® Baja. Sand pads included on Qwest® Baja, Eagle™ Select and Designer®.)

Patented, fully enclosed roof lifter system with lifetime warranty

4. Jayco uses tubular lifter posts instead of C-channels. Tubular posts are stronger. They have smooth walls and no edges to chafe or soil the tent. They also have no openings. Fingers can't get inside!

5. Stop worrying about cables or pulleys getting caught in lifter posts. It won't happen in a Jayco® camping trailer. Strong, flexible push-rods guide the roof up as you crank.

6. The roof lifter-system on all Jayco camping trailers is fully enclosed above the floor. This eliminates damage to parts from road debris and weather, a common problem with competitors' underfloor-mounted lifter systems. Our above floor system also eliminates the rodent or insect access points that are found where competitors' cables pass through the floor.

3. For years of trouble-free operation, we use nylon bushings in our lifter posts. This reduces friction, wear and tear.

2. It's OK to stop cranking. The automatic brake on our lifter-system winch helps prevent the roof from falling before it's all the way up.

1. We put our lifter-system crank at a comfortable height. You don't have to bend way over or scrape your knuckles on the ground to use it. We also made it easier to turn, so setup is easy.

TorFlex® independent torsion-axle suspension gives more ground clearance, provides a smooth ride, makes towing easier and reduces wear and tear by absorbing bumps (leaf springs on Qwest and Qwest Baja).



Our rugged, corrosion-resistant frames feature a 12-stage E-Coat™ finishing system. The frame supports the floor to the edge, giving Jayco camping trailers unibody strength and stability. And, our frames come with a lifetime warranty.





Practical optional accessories will set your mind at ease.



Nothing beats the taste of food grilled outdoors. Our optional portable gas barbecue grill makes it easy and comes with a handy carrying case.



The optional 16,000-BTU furnace with auto-ignition and thermostat lets you extend your stay when weather turns cold.



Jayco®'s optional SofStor™ storage system keeps your necessities out of the way but within easy reach. Choose from the SofStor wardrobe with removable shelves for clothing, the organizer for shoes and other small items and the overhead galley cabinet for food and other essentials (N/A Qwest® and Qwest® Baja).



Optional KidStuf™ bunk organizers give kids a place for their toys, books and other items.



Your music goes anywhere with the optional AM/FM stereo with cassette or CD player (N/A Qwest®).



The optional portable gray water tank lets you remove and dump the tank without the hassle of driving your camper to the dump station (N/A Qwest® and Qwest® Baja).



Store camping items such as folding lawn chairs, garden hoses, barbecue utensils or other dirty items in the optional OutStor™ organizers to keep the inside of your camper clean. Also, protect additional stored items with our removable vinyl bunk skirting option.



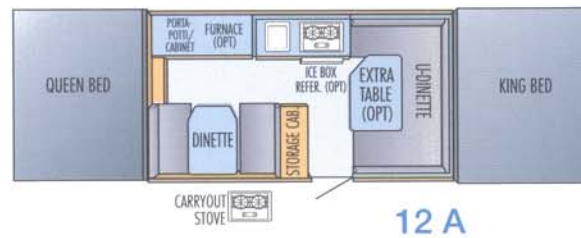
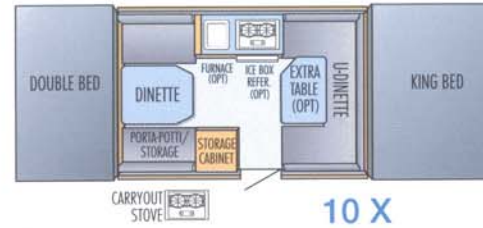
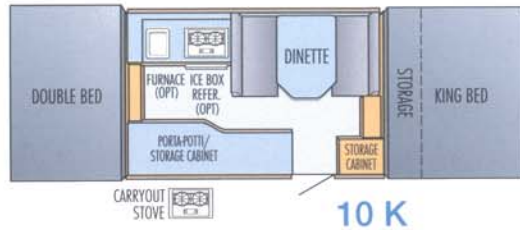
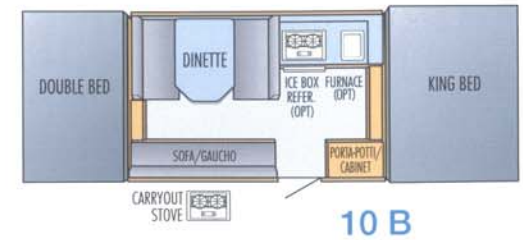
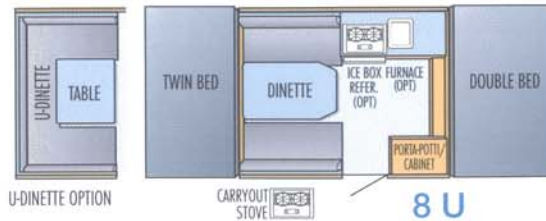
The optional spare (part of the convenience group) can come to the rescue so you're not left stranded. Add an optional color-coordinated wheel cover to protect it (integrated fiberglass wheel cover on Designer®).

An optional color-coordinated gas bottle cover protects and enhances your camper's good looks.





# 2004 Qwest® Camping Trailers Floorplans



## Qwest® Camping Trailers Specifications

| Model     | Travel Length | Campsite Length | Approx. Travel Height | Unloaded Vehicle Weight (w/std. equip.) (lbs.) | Approx. Hitch Weight (lbs.) | Axle Weight (lbs.) | Gross Vehicle Weight Rating (lbs.) | Cargo Carrying Capacity (w/out options) (lbs.) | Sleeping Capacity | Fresh Water Capacity (gals.) |
|-----------|---------------|-----------------|-----------------------|--|-----------------------------|--------------------|------------------------------------|--|-------------------|------------------------------|
| 8 U       | 12'           | 16'-3"          | 55 3/4"               | 1135   | 155                         | 980                | 1875                               | 740  | 6                 | 5                            |
| 10 B      | 13'-10"       | 20'-7"          | 55 3/4"               | 1465   | 180                         | 1285               | 2160                               | 695  | 7                 | 5                            |
| 10 K      | 15'-10"       | 20'-7"          | 55 3/4"               | 1700   | 120                         | 1580               | 2700                               | 1000   | 6                 | 5                            |
| 10 X      | 13'-10"       | 20'-1"          | 55 3/4"               | 1430   | 180                         | 1250               | 2160                               | 730  | 7                 | 5                            |
| 12 A      | 15'-10"       | 24'             | 55 3/4"               | 1640   | 225                         | 1415               | 2700                               | 1060   | 7                 | 10                           |
| Baja 10 Z | 16'-6"        | 20'-7"          | 67"                   | 1825   | 225                         | 1600               | 3000                               | 1175   | 7                 | 5                            |

**Unloaded Vehicle Weight (UVW):** Sometimes referred to as "Dry Weight," UVW means the typical weight of this trailer as built at the factory. The UVW, as used in product literature and other promotional materials, does not include cargo, fresh water, LP gas, options or dealer-installed accessories.

**Gross Vehicle Weight Rating (GVWR):** GVWR means the maximum permissible weight of the trailer, including the UVW plus passengers, personal items, all cargo, fluids, options and dealer-installed accessories. The GVWR is equal to or greater than the sum of the UVW and the CCC.

**Cargo Carrying Capacity (CCC):** CCC means the maximum weight of all passengers, personal items, food, fresh water, LP gas, tools, other cargo and dealer-installed accessories\* that can be carried by the trailer. CCC is equal to or less than GVWR minus UVW.

\*The addition of options will decrease the CCC.

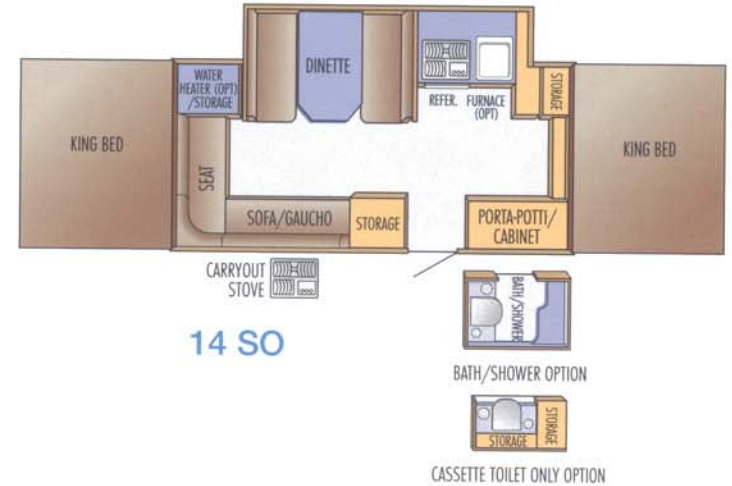
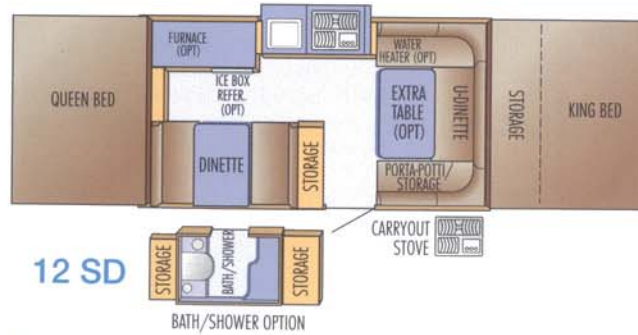
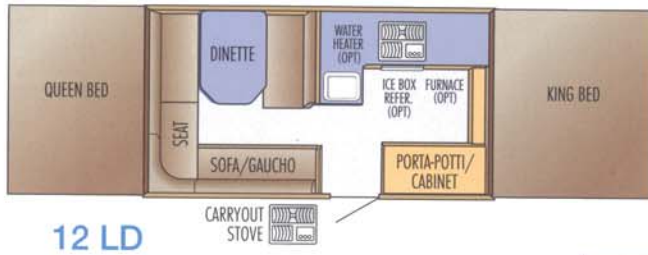
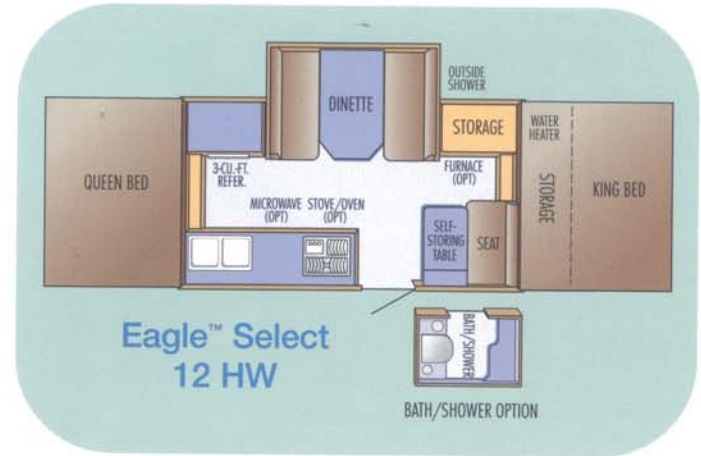
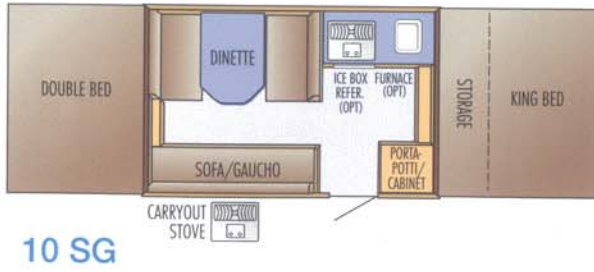
It is important for your safety and enjoyment that your tow vehicle be adequately sized and equipped to tow and handle the GVWR of the RV you select. Review weights and rating of your tow vehicle and consult a competent advisor for questions

or advice. Whether you are new to RVing or a veteran, get a feel for the performance of your tow vehicle and the RV together before heading out on the roadways. **When you tow an RV, you must drive differently than you do when driving a single vehicle.** Practice hooking up, driving, backing up and braking in a safe environment or seek out professional instruction.

See specification chart above. Jayco® affixes a weight label to each new RV which lists weight information for that vehicle.



# 2004 Eagle™ Camping Trailers Floorplans



## Eagle™ Camping Trailers Specifications

| Model               | Travel Length | Campsite Length | Approx. Travel Height | Unloaded Vehicle Weight (w/std. equip.) (lbs.) | Approx. Hitch Weight (lbs.) | Axle Weight (lbs.) | Gross Vehicle Weight Rating (lbs.) | Cargo Carrying Capacity (w/out options) (lbs.) | Sleeping Capacity | Fresh Water Capacity (gals.) |
|---------------------|---------------|-----------------|-----------------------|--|-----------------------------|--------------------|------------------------------------|--|-------------------|------------------------------|
| <b>10 SG</b>        | 16'-10"       | 21'-6"          | 55"                   | 1765   | 170                         | 1595               | 2800                               | 1035   | 7                 | 5                            |
| <b>12 FSO</b>       | 18'-10"       | 24'             | 55"                   | 2235   | 285                         | 1950               | 3000                               | 765  | 7                 | 17                           |
| <b>12 LD</b>        | 16'-10"       | 24'             | 55"                   | 1910   | 185                         | 1725               | 2800                               | 890  | 7                 | 17                           |
| <b>12 SD</b>        | 18'-10"       | 24'             | 55"                   | 2015   | 180                         | 1835               | 2900                               | 885  | 6                 | 17                           |
| <b>14 SO</b>        | 18'-10"       | 26'             | 57"                   | 2675   | 280                         | 2395               | 3330                               | 655  | 7                 | 17                           |
| <b>Select 12 HW</b> | 18'-10"       | 24'             | 64"                   | 2550   | 250                         | 2300               | 3500                               | 950  | 6                 | 17                           |



# 2004 Camping Trailers Standards and Options

## STANDARD EXTERIOR FEATURES

|  | QWEST® | QWEST® BAJA | EAGLE™ | EAGLE™ SELECT | DESIGNER® |
|--|--------|-------------|--------|---------------|-----------|
| Crank-down stabilizer jacks w/sand pads (4) (10 Z: 2 std., 2 opt.) |        |             |        |               |           |
| Crank-down stabilizer jacks (4) (8' & 10' Qwest®: 2 std., 2 opt.)  |        |             |        |               |           |
| * D-range 14" tires  |        |             |        |               |           |
| C-range 13" tires (all 12' models & 10 SG)                         |        |             |        |               |           |
| C-range 12" tires (8', 10', 14' models)                            |        |             |        |               |           |
| 15" Dunlop® Mud Rover off-road tires                               |        |             |        |               |           |
| Outside porch light w/awning light adapter                         |        |             |        |               |           |
| Patio light w/bright lens (except 8 U)                             |        |             |        |               |           |
| Clearance lights (11)  |        |             |        |               |           |
| * 36-ft. 30-amp. power cord  |        |             |        |               |           |
| 30-ft. 30-amp. power cord  |        |             |        |               |           |
| 110V G.F.C.I. - protected exterior receptacle (except 8 U)         |        |             |        |               |           |
| Heavy-duty A-frame leveling jack                                   |        |             |        |               |           |
| Welded steel bumper  |        |             |        |               |           |
| Entrance door opens when roof is down                              |        |             |        |               |           |
| Double entrance step   |        |             |        |               |           |
| Wide-body construction   |        |             |        |               |           |
| * Front trunk storage (2-level/accommodates storage drawer option) |        |             |        |               |           |
| Front trunk storage (some models)                                  |        |             |        |               |           |
| Light in front trunk   |        |             |        |               |           |
| Prep for battery   |        |             |        |               |           |
| Lifter post covers   |        |             |        |               |           |
| Patented, fully-enclosed lifter system                             |        |             |        |               |           |
| * Twin 20-lb. LP gas bottles                                       |        |             |        |               |           |
| 20-lb. LP gas bottle   |        |             |        |               |           |
| * Fiberglass domed roof w/no center seam                           |        |             |        |               |           |
| One-piece seamless fiberglass domed roof                           |        |             |        |               |           |
| Fiberglass front/rear body panels                                  |        |             |        |               |           |
| Fiberglass LP gas bottle cover                                     |        |             |        |               |           |
| * Diamond-plated front and rear walls                              |        |             |        |               |           |
| Front storage deck with diamond plate surface and deck railing     |        |             |        |               |           |
| Aluminum wheels  |        |             |        |               |           |
| Truck-type rubber fenders  |        |             |        |               |           |
| Mud flaps  |        |             |        |               |           |
| Shock absorbers  |        |             |        |               |           |
| Tubular steel rear bumper similar to TT & FW product               |        |             |        |               |           |
| TruForm® scratch-resistant finish                                  |        |             |        |               |           |
| E-Coat™ frame protection   |        |             |        |               |           |
| Self-storing step (12', 14' models)                                |        |             |        |               |           |
| One-piece water-repellent Camper-Tex™ vinyl tent                   |        |             |        |               |           |
| Undercoated, edge-sealed Structurwood® floor                       |        |             |        |               |           |
| Electric brakes  |        |             |        |               |           |
| E-Z Lube® axles  |        |             |        |               |           |
| One-piece entrance door  |        |             |        |               |           |
| Front & rear ABS caps  |        |             |        |               |           |
| Color-coordinated radius skirting                                  |        |             |        |               |           |
| * White powder-coated box top extrusions w/white corner caps       |        |             |        |               |           |
| * Velcro tent attachment around entrance door                      |        |             |        |               |           |
| One-piece high-density polyethylene wheel wells                    |        |             |        |               |           |

\* New for 2004

## STANDARD INTERIOR FEATURES

|  | QWEST® | QWEST® BAJA | EAGLE™ | EAGLE™ SELECT | DESIGNER® |
|--|--------|-------------|--------|---------------|-----------|
| * Westview maple flat-panel doors and drawers                            |        |             |        |               |           |
| Fire extinguisher  |        |             |        |               |           |
| LP leak detector   |        |             |        |               |           |
| Wall-to-wall, color-coordinated vinyl flooring                           |        |             |        |               |           |
| Real wood drawers with nylon guides                                      |        |             |        |               |           |
| * Pewter door pulls w/roller catch                                       |        |             |        |               |           |
| * Deep-quilted end-bunk cushions   |        |             |        |               |           |
| Reversible, non-slide 4"-thick dinette cushions w/easy-clean vinyl backs |        |             |        |               |           |
| 14" x 14" roof vent  |        |             |        |               |           |
| End-bunk privacy curtains  |        |             |        |               |           |
| SoftShade™ window shades and valances                                    |        |             |        |               |           |
| * Clear vinyl windows  |        |             |        |               |           |
| 12V high-intensity lighting  |        |             |        |               |           |
| Automatic cut-off switch for interior lights                             |        |             |        |               |           |
| 110V G.F.C.I. - protected interior receptacles                           |        |             |        |               |           |
| Mildew-resistant aluminum ceiling  |        |             |        |               |           |
| Adjustable-tension end-bunk bows   |        |             |        |               |           |
| Bed flaps  |        |             |        |               |           |
| Swing-level galley   |        |             |        |               |           |
| Hinged dinette seat bases  |        |             |        |               |           |
| * Clothes hanger bar   |        |             |        |               |           |
| * Courtesy floor lights  |        |             |        |               |           |

|   | QWEST® | QWEST® BAJA | EAGLE™ | EAGLE™ SELECT | DESIGNER® |
|---|--------|-------------|--------|---------------|-----------|
| * Double-bowl white acrylic sink w/high-rise faucet   |        |             |        |               |           |
| * White acrylic sink  |        |             |        |               |           |
| Faucet w/hold-down  |        |             |        |               |           |
| * Single-lever faucet w/12V demand water pump   |        |             |        |               |           |
| * Deluxe plumbing package w/dual-knob faucet (includes 6-gal. water heater, 12V demand pump and outside shower) |        |             |        |               |           |
| * Fluorescent light above sink  |        |             |        |               |           |
| 2-cu.-ft. 110V/12V/LP gas refrigerator  |        |             |        |               |           |
| * 3-cu.-ft. 110V/12V/LP gas refrigerator  |        |             |        |               |           |
| Large-capacity, self-draining insulated ice box   |        |             |        |               |           |
| White enamel carryout stove (2- or 3-burner, depending on model)  |        |             |        |               |           |
| Pre-plumbed for LP gas appliances   |        |             |        |               |           |
| Carryout dinette table  |        |             |        |               |           |
| 12V electrical system with 30-amp. 110V converter   |        |             |        |               |           |
| 12V electrical system with 20-amp. 110V converter   |        |             |        |               |           |
| 12V electrical system with 12-amp. 110V converter   |        |             |        |               |           |
| City water hookup   |        |             |        |               |           |
| Country water fill (12', 14' models)  |        |             |        |               |           |
| 17-gal. fresh water tank below floor (12', 14' models)  |        |             |        |               |           |
| 10-gal. fresh water tank (12 A)   |        |             |        |               |           |
| 5-gal. fresh water tank (8', 10' models)  |        |             |        |               |           |
| * Battery gauge   |        |             |        |               |           |

\* New for 2004



# 2004 Camping Trailers Standards and Options – Continued

## OPTIONAL FEATURES

|   | QWEST® | QWEST® BAJA | EAGLE™ | EAGLE™ SELECT | DESIGNER® |
|---|--------|-------------|--------|---------------|-----------|
| Convenience group (includes options w/✓)            | ■      | ■           | ■      | ■             | ■         |
| Spare tire  | ■✓     | ■✓          | ■✓     | ■✓            | ■✓        |
| Vinyl spare tire cover                              | ■      | ■           | ■      | ■             | ■         |
| Outside portable gas BBQ grill w/carrying case      | ■      | ■           | ■      | ■             | ■         |
| * Microwave oven w/carousel                         | ■      | ■           | ■      | ■             | ■         |
| * Oven/range/range cover                            | ■      | ■           | ■      | ■             | ■         |
| Hydraulic surge brakes                              | ■      | ■           | ■      | ■             | ■         |
| Electric brakes                                     | ■      | ■           | ■      | ■             | ■         |
| Canopy/screen room/deluxe screen room               | ■      | ■           | ■      | ■             | ■         |
| Self-storing step (all Qwest® and 10 SG)            | ■✓     | ■           | ■      | ■             | ■         |
| Prep for air conditioning                           | ■      | ■✓          | ■✓     | ■✓            | ■✓        |
| 2-cu.-ft. 110V/12V/LP gas refrigerator (std. 14 SO) | ■      | ■           | ■      | ■             | ■         |
| * Twin vinyl gas bottle cover                       | ■      | ■✓          | ■      | ■✓            | ■         |
| Vinyl gas bottle cover                              | ■✓     | ■           | ■✓     | ■             | ■         |
| 16,000-BTU furnace with auto-ignition               | ■      | ■           | ■      | ■             | ■         |
| End-bunk lights w/ fan (1 or 2)                     | ■      | ■✓          | ■✓     | ■✓            | ■✓        |
| KidStuf™ bunk organizer                             | ■      | ■           | ■      | ■             | ■         |
| Silverware tray (some models)                       | ■      | ■           | ■      | ■             | ■         |
| Extra dinette table w/pedestal leg (some models)    | ■      | ■           | ■      | ■             | ■         |
| U-dinette in lieu of standard dinette (8 U)         | ■      | ■           | ■      | ■             | ■         |
| SofStor™ overhead storage (1 or 2)                  | ■      | ■           | ■      | ■             | ■         |
| SofStor™ wardrobe storage                           | ■      | ■           | ■      | ■             | ■         |
| SofStor™ organizer                                  | ■      | ■           | ■      | ■             | ■         |
| OutStor™ storage package                            | ■      | ■           | ■      | ■             | ■         |
| Diamond plate tool box                              | ■      | ■           | ■      | ■             | ■         |
| Removable vinyl bunk skirt                          | ■      | ■           | ■      | ■             | ■         |
| End-bunk privacy curtains                           | ■✓     | ■✓          | ■✓     | ■✓            | ■         |
| 14" x 14" roof vent                                 | ■✓     | ■✓          | ■✓     | ■✓            | ■         |
| * 12V attic fan (separate location from roof vent)  | ■      | ■           | ■      | ■             | ■         |

\* New for 2004

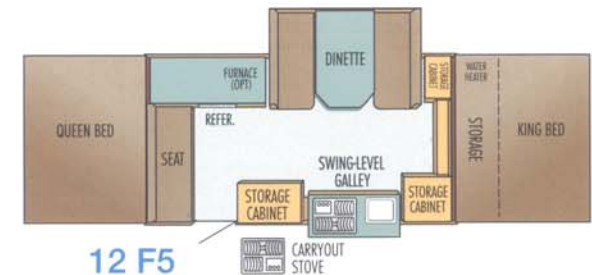
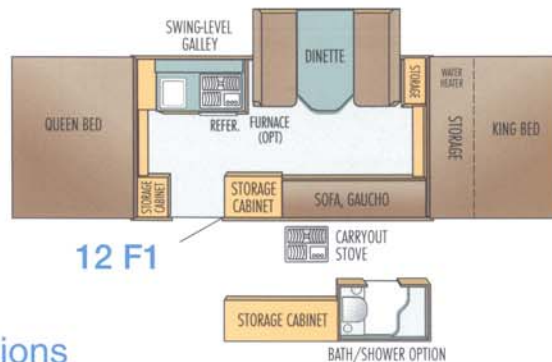
Convenience group (includes options w/✓)

\* New for 2004

## OPTIONAL FEATURES (CONTINUED)

|  | QWEST® | QWEST® BAJA | EAGLE™ | EAGLE™ SELECT | DESIGNER® |
|--|--------|-------------|--------|---------------|-----------|
| 10-gal. fresh water tank (10 SG)   | ■      | ■           | ■      | ■             | ■         |
| 10-gal. fresh water tank w/demand pump   | ■      | ■           | ■      | ■             | ■         |
| Front stabilizer jacks (8' & 10' models)   | ■      | ■           | ■      | ■             | ■         |
| Front stabilizer jacks w/sand pads   | ■      | ■           | ■      | ■             | ■         |
| Battery gauge  | ■      | ■           | ■      | ■             | ■         |
| Generator prep   | ■      | ■           | ■      | ■             | ■         |
| Generator 2800-watt  | ■      | ■           | ■      | ■             | ■         |
| Solar prep   | ■      | ■           | ■      | ■             | ■         |
| 12V rechargeable spot light  | ■      | ■           | ■      | ■             | ■         |
| Bath/shower package (includes privacy curtain and deluxe plumbing package) (some models)   | ■      | ■           | ■      | ■             | ■         |
| Deluxe plumbing package w/dual-knob faucet (includes 6-gal. water heater, 12V demand pump and outside shower; N/A on 10 SG)  | ■      | ■           | ■      | ■             | ■         |
| AM/FM cassette or CD stereo  | ■      | ■           | ■      | ■             | ■         |
| Cassette toilet (12 FSO, 14 SO)  | ■      | ■           | ■      | ■             | ■         |
| Portable gray water tank   | ■      | ■           | ■      | ■             | ■         |
| * Cable & TV jack  | ■      | ■           | ■      | ■             | ■         |
| * Sink cover (1)   | ■      | ■           | ■      | ■             | ■         |
| * Water purifier   | ■      | ■           | ■      | ■             | ■         |
| * Polished aluminum rims   | ■      | ■           | ■      | ■             | ■         |
| * Heated bed mats  | ■      | ■           | ■      | ■             | ■         |
| * Heated innerspring bed mats  | ■      | ■           | ■      | ■             | ■         |
| * Spice rack   | ■      | ■           | ■      | ■             | ■         |
| * Storage shelf (2)  | ■      | ■           | ■      | ■             | ■         |
| * Exterior storage drawer  | ■      | ■           | ■      | ■             | ■         |
| 30-amp. converter  | ■      | ■           | ■      | ■             | ■         |
| Founder's Edition Package (sink cover, spice rack, silverware drawer, polished aluminum rims, fitted bed sheets & pillow cases, storage shelf (2), graphic insignia) | ■      | ■           | ■      | ■             | ■         |

## 2004 Designer® Camping Trailers Floorplans



## Designer® Camping Trailers Specifications

| Model | Travel Length | Campsite Length | Approx. Travel Height | Unloaded Vehicle Weight (w/std. equip.) (lbs.) | Approx. Hitch Weight (lbs.) | Axle Weight (lbs.) | Gross Vehicle Weight Rating (lbs.) | Cargo Carrying Capacity (w/out options) (lbs.) | Sleeping Capacity | Fresh Water Capacity (gals.) |
|-------|---------------|-----------------|-----------------------|--|-----------------------------|--------------------|------------------------------------|--|-------------------|------------------------------|
| 12 F1 | 18'-10"       | 24'             | 56"                   | 2505   | 225                         | 2280               | 3375                               | 870  | 7                 | 17                           |
| 12 F5 | 18'-10"       | 24'             | 56"                   | 2525   | 345                         | 2180               | 3375                               | 850  | 6                 | 17                           |



Qwest® Baja rolls over uneven ground easily with a full 13" of ground clearance.



Designer® 12 F5



## We back what we build

**2+3  
Warranty**

The Jayco® 2+3 Warranty is a manufacturer's warranty. It doesn't come from your dealer and it's not an extended warranty! It comes from the people who build Jayco recreational vehicles to the

people who buy them. Each Jayco is warranted to the original purchaser for twenty-four (24) months from the date of purchase against defects in materials and workmanship. This is full hitch-to-bumper coverage on towables and bumper-to-bumper on motorized RVs. The Jayco warranty includes a three-year (3) structural guarantee. In addition, our warranty is transferable within the first two (2) years for a \$100 processing fee. Go ahead and compare the Jayco warranty with other manufacturers' warranties. You'll find it's the best in the business! For a copy of the warranty with full terms and conditions, ask your local Jayco dealer or visit our Web site.



**Lifetime Coverage** On all camping trailers, Jayco offers to the original purchaser additional industry-leading lifetime parts and labor coverage on our lifter system, roof, floor and frame. We also offer five-year (5)

coverage on our tent with parts, labor and freight covered the first two years; parts, factory labor and return freight during years three, four and five.



See dealer for further information and prices.



FAMILY OWNED. FAMILY FOCUSED.

Jayco, Inc. P.O. Box 460 Middlebury, IN 46540  
www.jayco.com



As a Jayco owner, you can be part of the Jayco Jafari International Travel Club. Ask your dealer about the Jafari "flight" in your area, write Jayco direct or visit our Web site.

**Please Note:** All information in this brochure is the latest available at the time of publication approval. Jayco reserves the right to make changes and to discontinue models without notice or obligation.

Pictures in this brochure may show optional equipment. RVs built for sale in Canada may differ to conform to Canadian codes.

Printed on recycled paper.



©2003 Jayco, Inc. 1103-125M Litho in U.S.A.